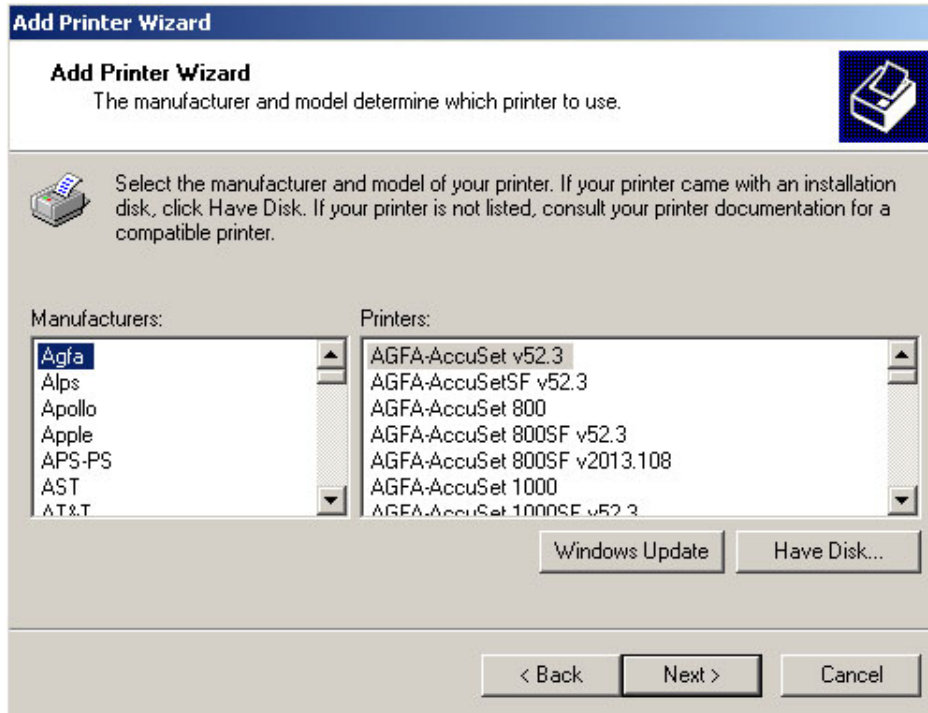


## Installation of CorelDraw Drivers

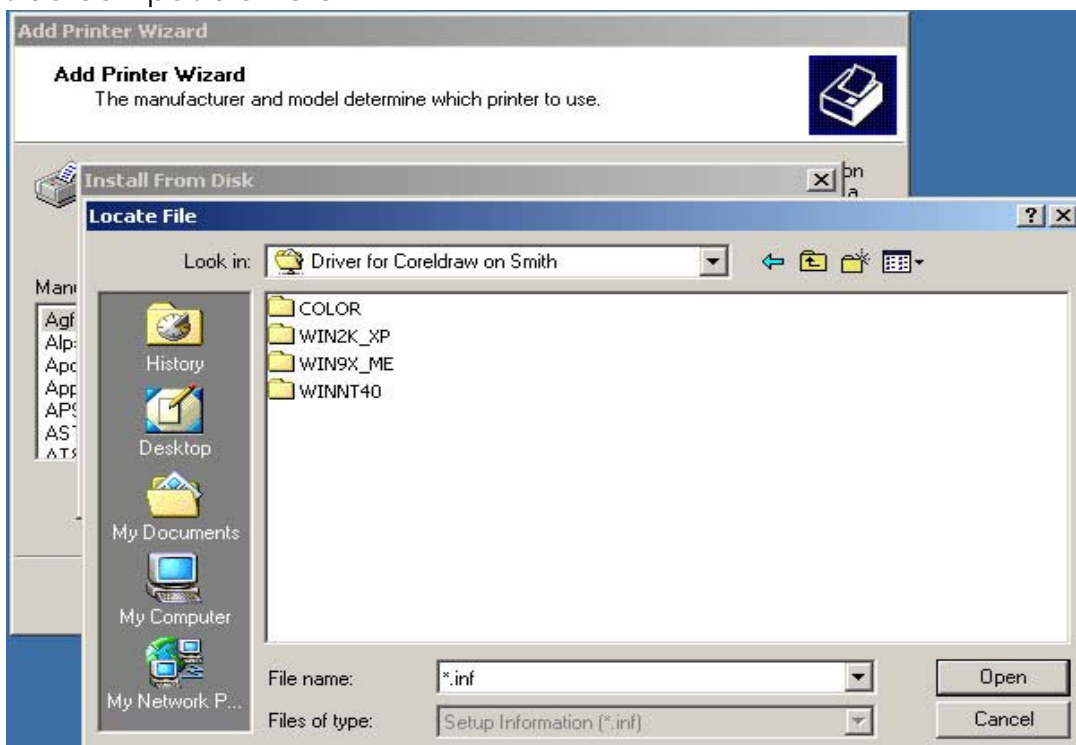
### 1. Add the new printer

#### A. Select the printer from 'Have Disk'

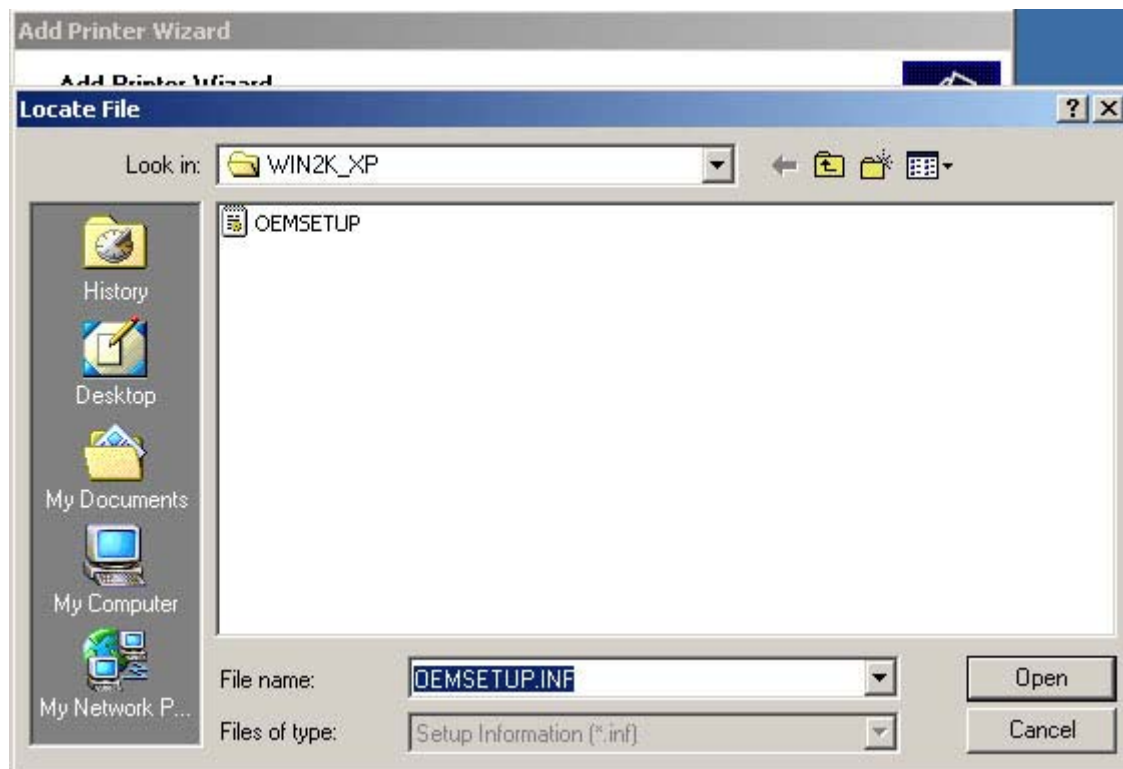


#### B. Select the drivers

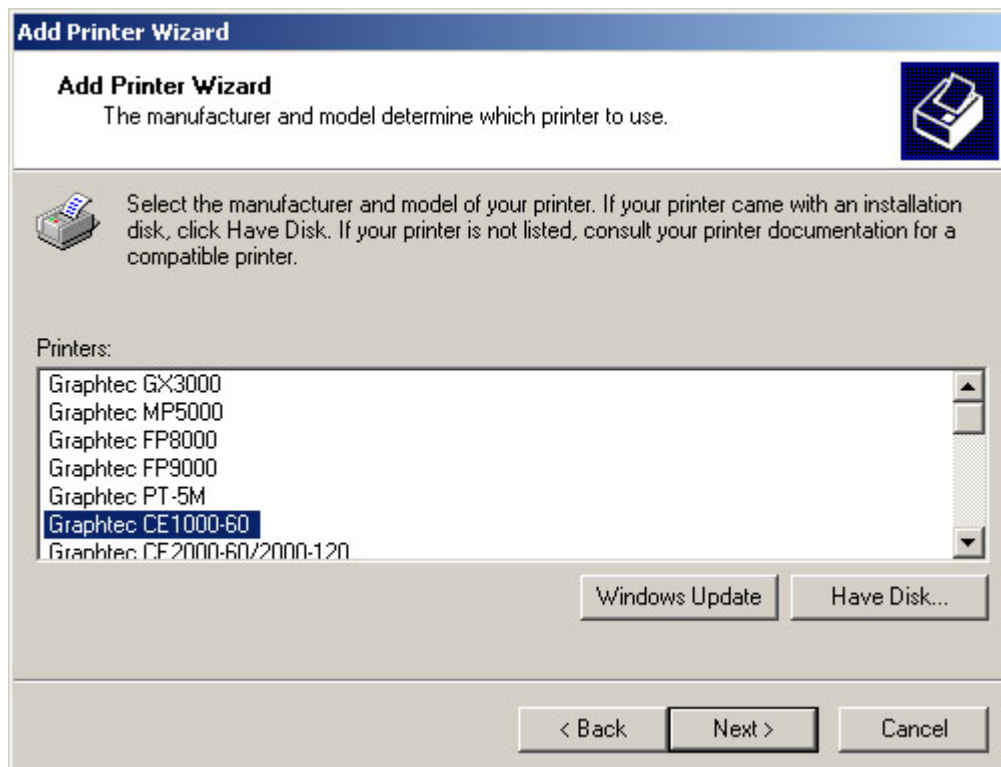
You must select the correct OS from the list which you are running, otherwise it cannot be compatible herein.



Then select OEMSETUP.INF.



C. The suggested printer model is Graphtec CE1000-60;

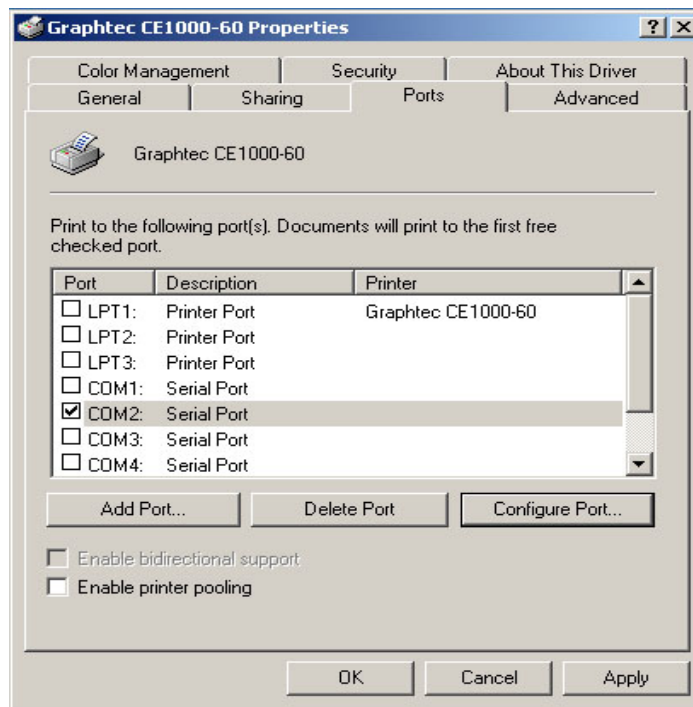


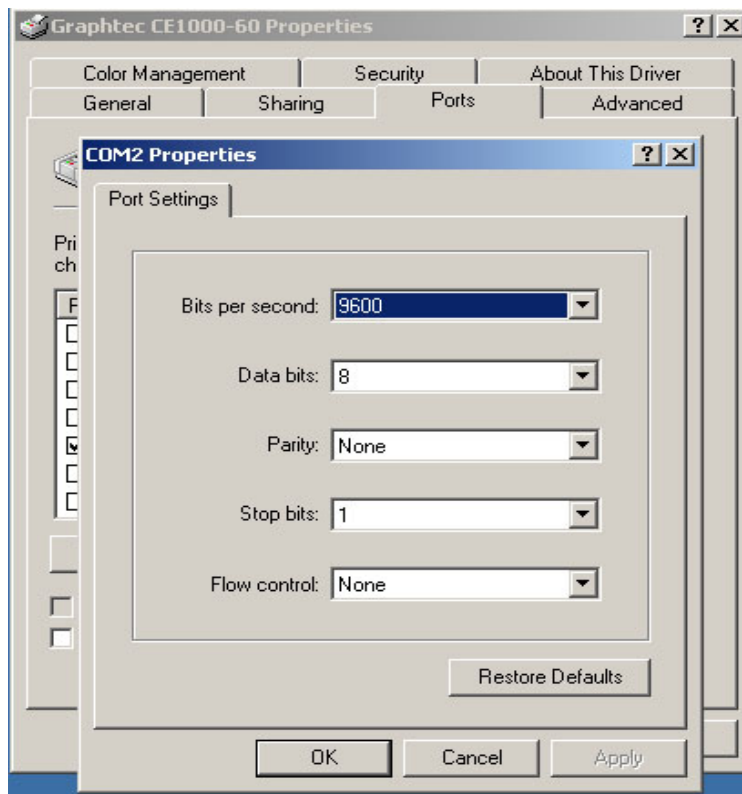
## 2. Printer Settings

After you set Graphtec CE1000-60 as **default** printer, then make the settings as follows,

### A. Ports Settings

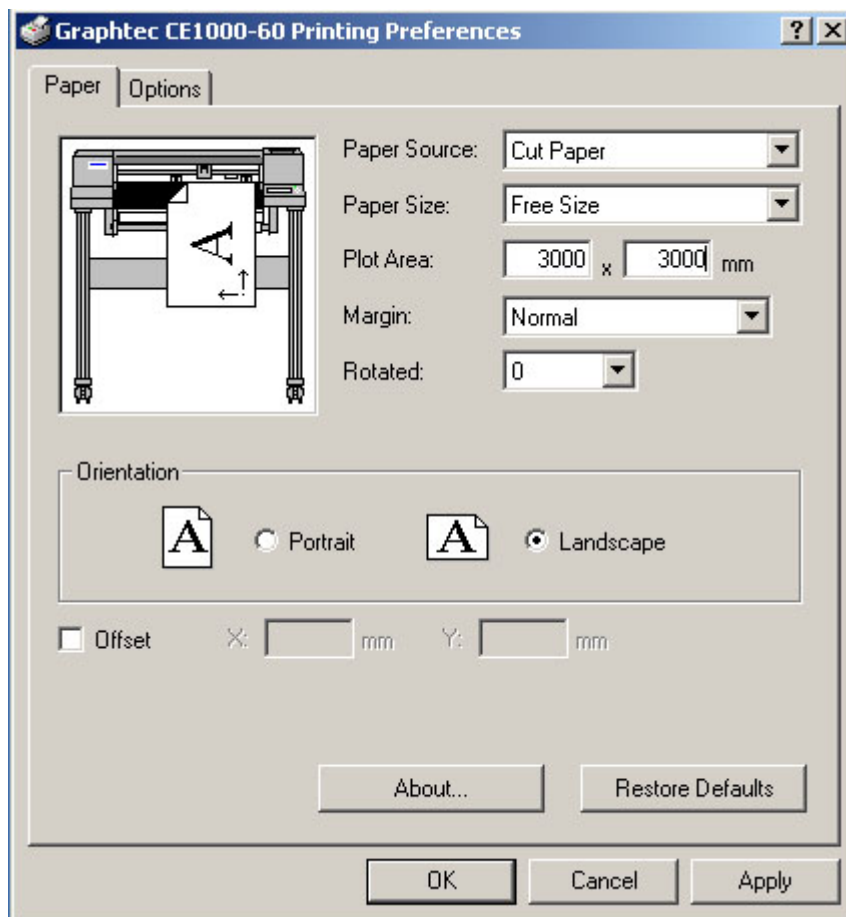
For LPT1, no settings needed, but for COM1 or COM2, just change "the flow control" to **Hardware**.





**B. PAPER Settings,**

- (1) Paper Source: Cut Paper;
- (2) Paper Size: Free Size;
- (3) Plot Area: 3000x3000 mm



### 3. CorelDraw OutPut

#### A. Edit Work

(1) For letter or character, first SKETCH them (as Figure 1), then FILL them with **NOFILL** (as Figure 2), and PRINT.

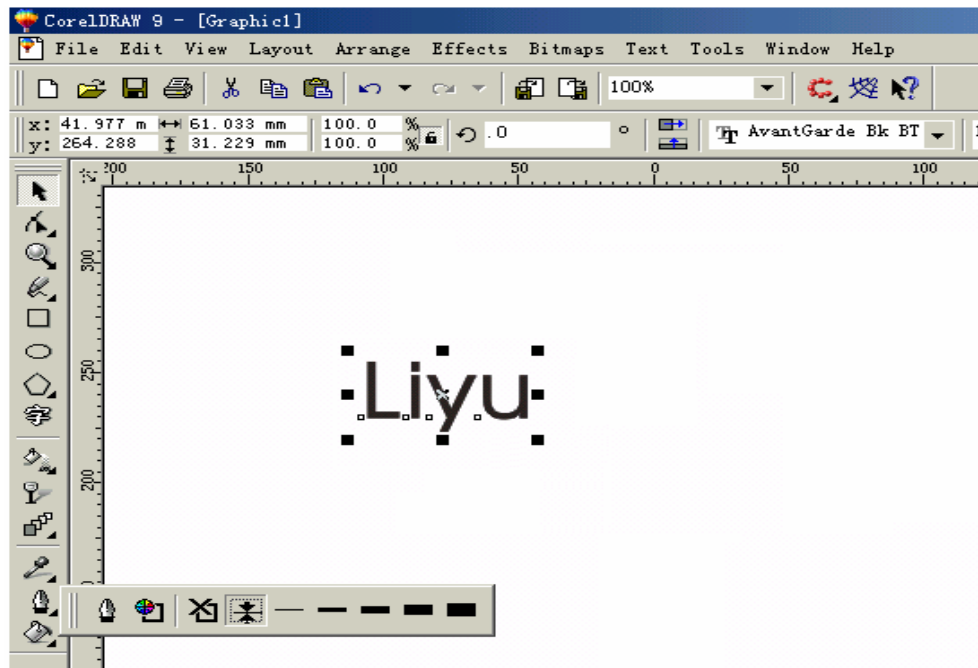


Figure 1. CorelDraw Edit Area - 1

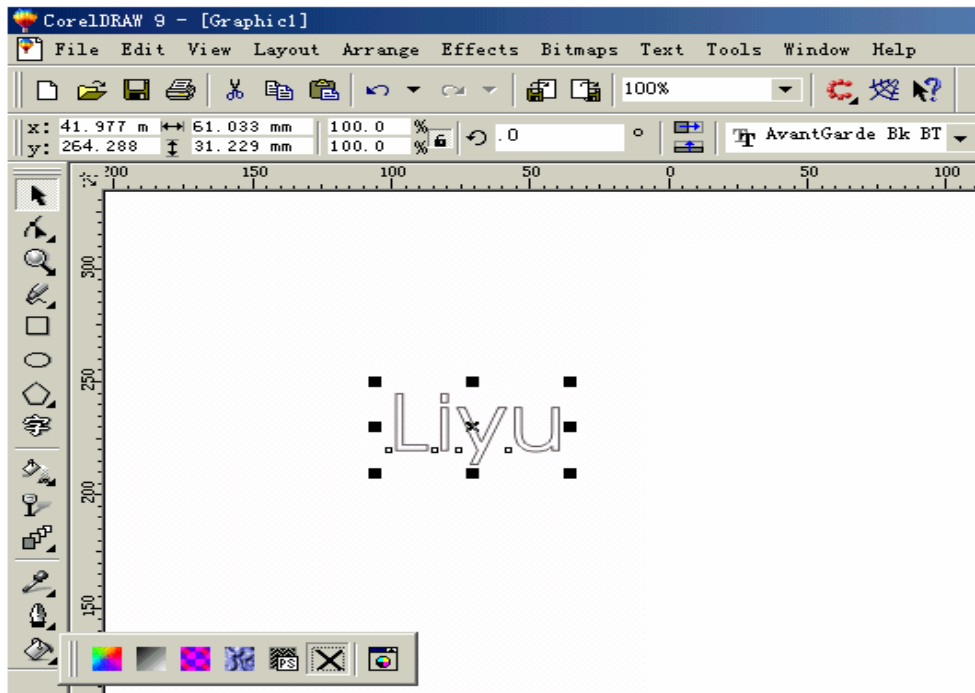


Figure 2. CorelDraw Edit Area - 2

### B. Online with the LIYU Cutting Plotter:

Before you send out the data to the cutting plotter, please do move the carriage manually from the original right side to the left side of the vinyl paper, then you can press "PRINT" to send the data and communicate with the cutting plotter.

### C. Print Settings

Select File \ Print, it will display like Figure.3, please change the Layout \ Reposition Images to **Bottom Left Corner**, and do make the right Print settings as Figure 3.

Note: The wrong PRINT settings such as Figure 4 will cause print failure.

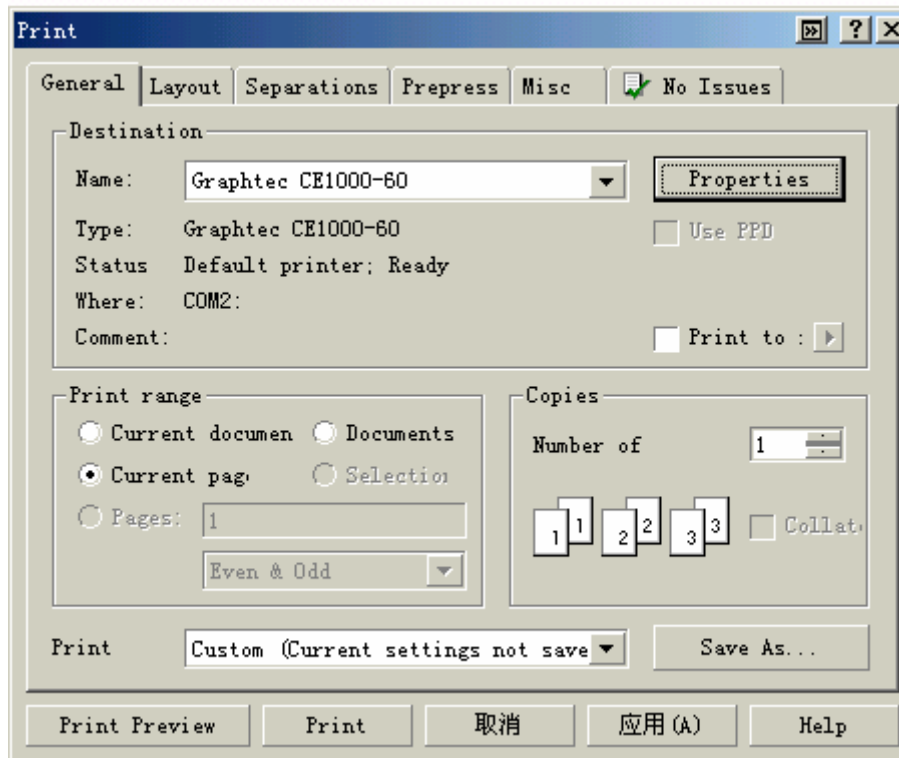


Figure 3. Proper Settings

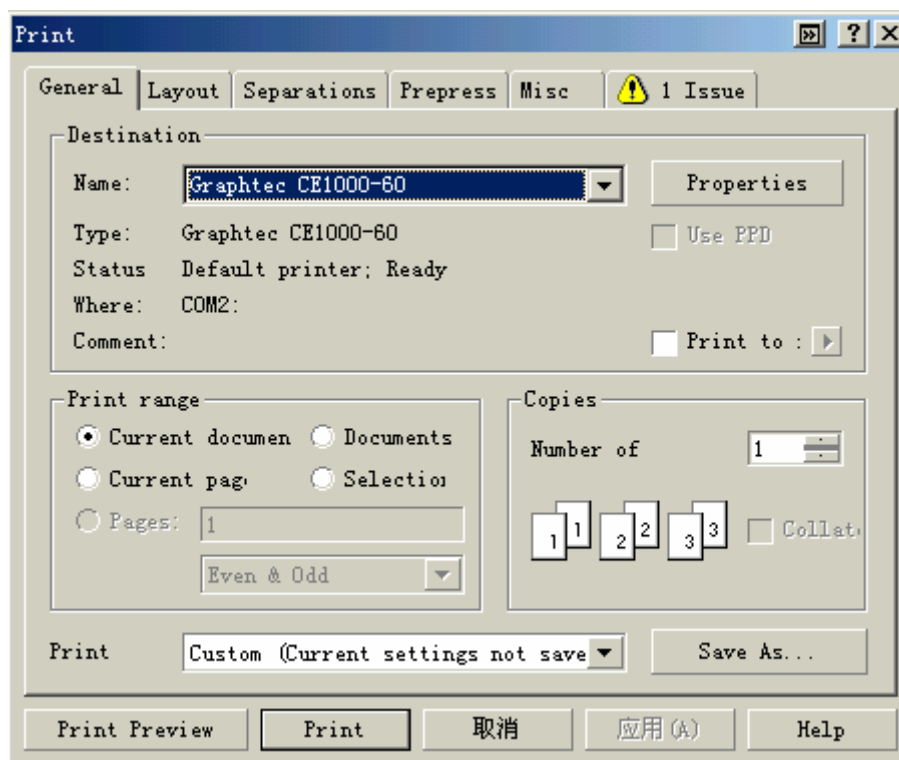


Figure 4. Fault Settings